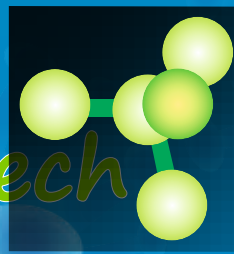


Abbes Biotech



COVID-19

Product data sheet

Viral RNA Purification Mini Spin Column Kit

Designed for Viral RNA from nasal swab, nasopharyngeal swab and throat swab with transport medium samples.

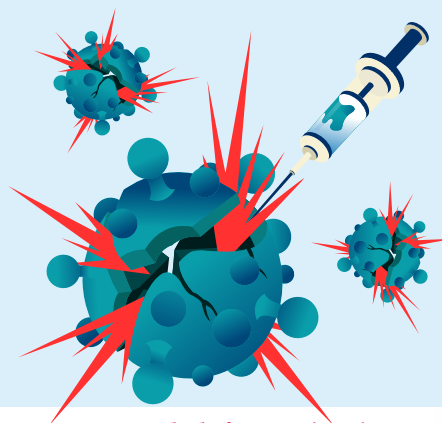
(Also suitable for the isolation from plasma, serum, cell-free body fluids and culture supernatants)



Certifications



INTENDED USE



The Abbes Biotech Viral RNA Purification Mini Spin Column Kit is Intended for Molecular Biology Applications (such As RT PCR, qPCR).

(This Product is not Intended for the Diagnosis, Prevention or Treatment of a Disease. The System is Intended for use by Professional users Trained in Molecular Biological Techniques. All Due Care and Attention should be Exercised in the Handling of the Products. We Recommend all users of Products to Adhere to The CDC / NIH Guidelines that have been Developed for Recombinant DNA / RNA Experiments or to other Applicable Guidelines.)

ORDERING INFORMATION

CAT. NO.

NA-2021-RC100

NA-2021-RC300

PRODUCT

ABIGEN® COVID 19 Viral RNA Extraction Spin Column Mini Prep Kit

ABIGEN® COVID 19 Viral RNA Extraction Spin Column Mini Prep Kit

UNITS

100 Preps

300 Preps



STORAGE:

The kit is stable for 12 months at room temperature
For longer storage keep all the content of the kit cold in 2-8°C.



RNA EXTRACTION PROCEDURE FLOW CHART

Mini Spin
Column Based
Method



Cell Lysis



Ethanol



Total RNA binding



Washes



Pre Warm
RNA elution



APPLICATIONS:

1. Preparation of total RNA from variable viral sources such as swab with transport medium
2. RT PCR / qPCR / Molecular Detection
3. C DNA synthesis
4. Poly A + RNA selection
5. RNase /s1 nuclease protection

FEATURES:



1. Fast preparation of high quality total RNA from viral and animal cells sources with 20 mins
2. Efficiency above 95%
3. High yields up to 20µg
4. Cost effective
5. No phenol / chloroform extraction

CE IVD

Manufactured By:
ABBES BIOTECH
CHENNAI | INDIA

Contacts: +91 72999 53878,
E-mail: orderdesk@abbesbiotech.com
www.abbesbiotech.com www.abbesbiotech.in

AN ISO 13485:2016
AND ISO 9001:2015
CERTIFIED COMPANY